

**ACCELERATE
AHEAD**



CONNECTING TO VALUE BEYOND THE EDGE

Taming the Complexity of Multi-path,
Multi-Orbit Mobile Connectivity

There have never been more opportunities for connectivity with vessels, platforms and places beyond the edge of today's terrestrial networks. There has also never been greater complexity, with a growing number of communication paths, satellite orbits, unique networks and specialized technologies.

Preparing You for the Future

The satellite industry is innovating at speed to prepare for a future of IoT and autonomous systems, 5G and explosive growth in internet demand everywhere. It is all expected to boost satcom revenues to \$100 billion per year in 2027 according to Allied Market Research, up by a CAGR of 9.2%.

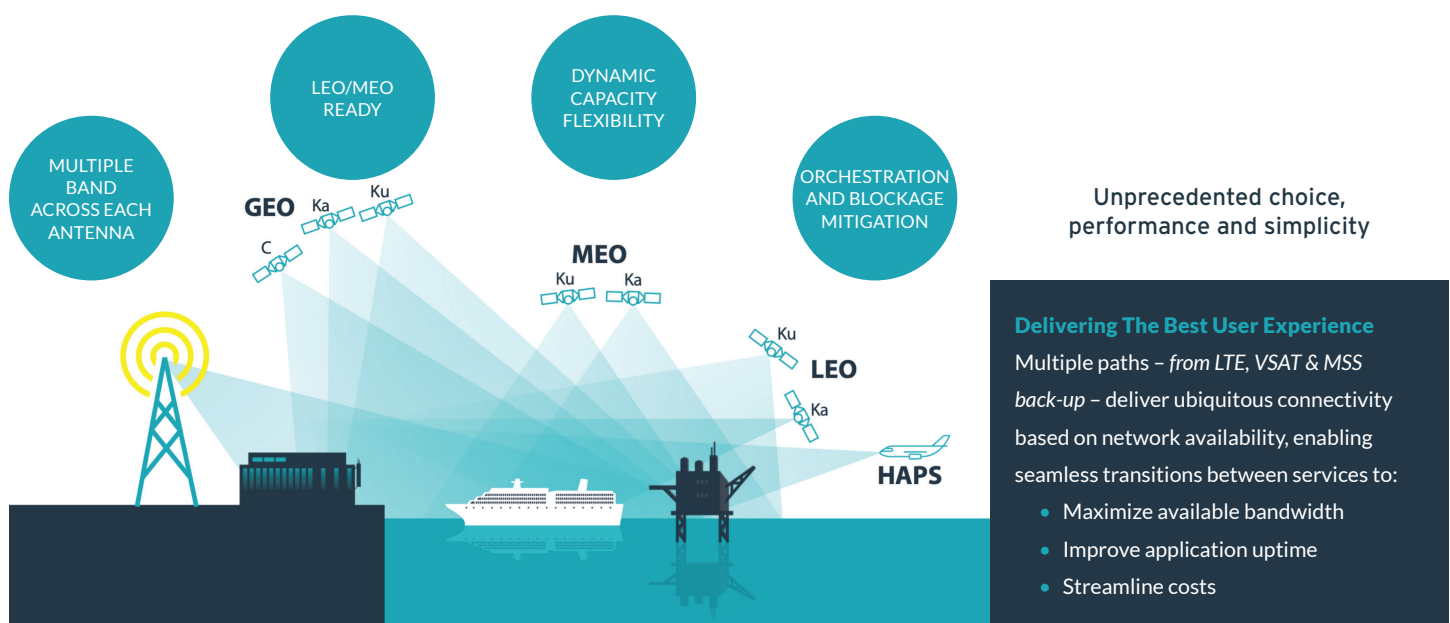
New middle-Earth orbit (MEO) satellites and emerging low-Earth orbit (LEO) constellations are putting massively more bandwidth into the sky, each with its own special requirements. Technologies on the ground and in space are boosting how much traffic that bandwidth can carry beyond all expectation. In some areas, costs are falling as

a result and so is latency – the time it takes for a bit to transit the network – bringing fiber-like performance within reach.

With opportunity comes challenge – in fact, two of them. The first is finding a way to take cost-effective advantage of these developments today with the least downside risk to operations. This includes ensuring you don't implement a solution that leaves you single-threaded and gazing at your navel. The second is future proofing these solutions to take advantage of tomorrow's innovations, because change continues to accelerate.

WHEN IT COMES TO REMOTE OPERATIONS, NO ONE WANTS TO PLACE THE WRONG TECHNOLOGY BET.

That's why Speedcast delivers multi-path, multi-orbit connectivity for the highest levels of availability & flexibility.

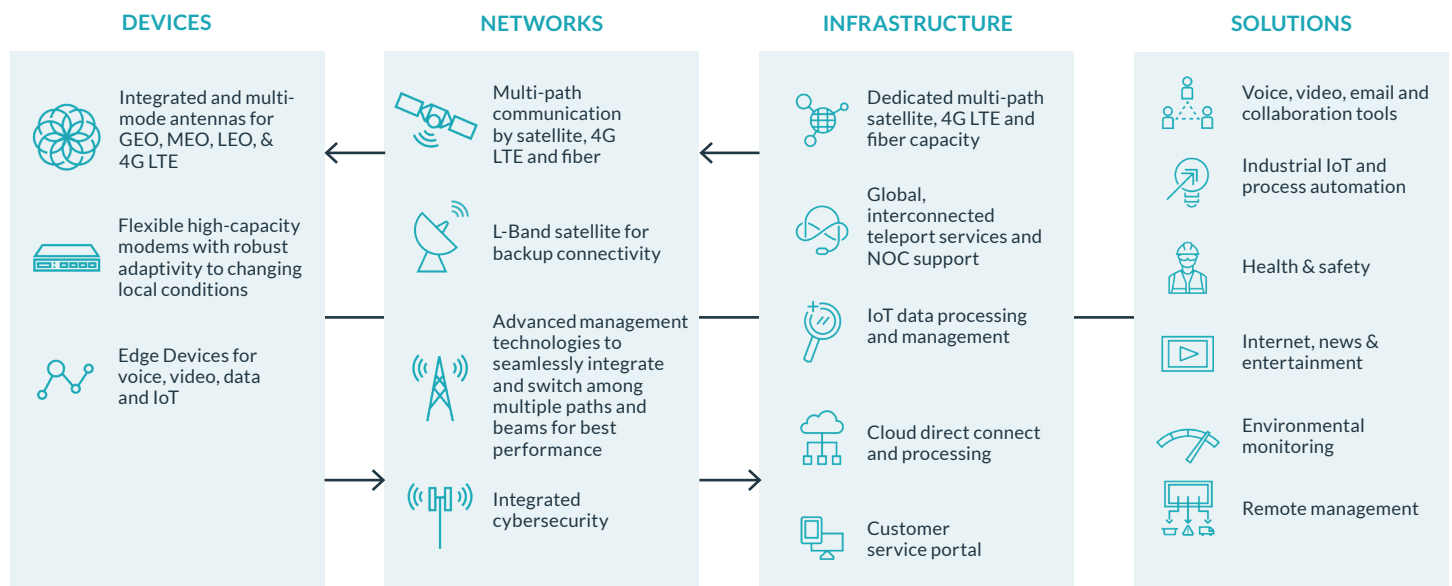


Software-defined automated management technology incorporates proactive monitoring to make the right choice of network path based on changes in operating environment.



Designing a Unified Mobility Platform

Meeting these challenges is a matter of getting the right fundamental architecture in place to seamlessly and automatically manage the complexity of current systems and provide adaptability for future ones. The design is based on four pillars:

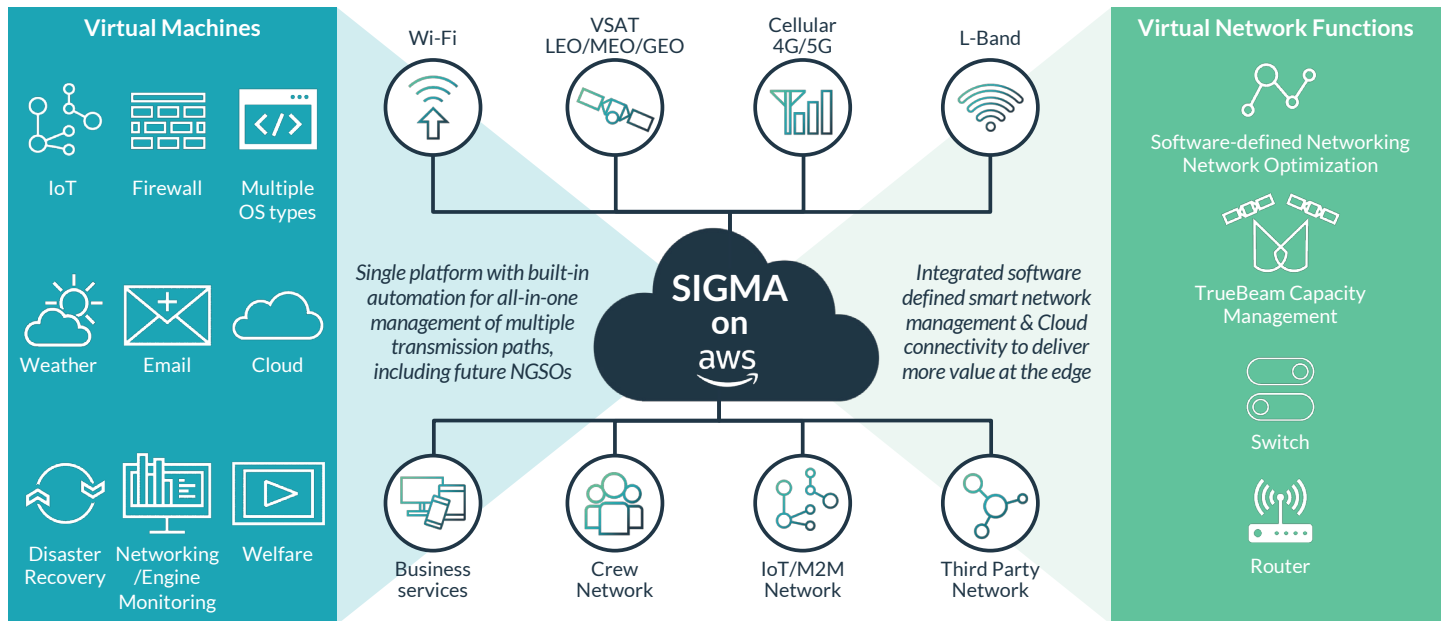


Each implementation will vary with location, applications, and available space. For example, a new generation of multi-orbit satellite antennas can save deck space but do not yet offer the same performance as multiple antennas integrated into a single modem. Companies with a strong commitment to the cloud will value direct connection from the most remote site into their cloud applications. Another company may not prioritize things the same way. The point of an effective design is to support the broadest range of requirements with the minimum in costly customization.

Accelerate Ahead, With Risk-free Continuity of Service Far into the Future

The Speedcast Unified Global Mobility Platform was designed from end to end to meet those requirements while making edge networks more manageable even as technology options grow.

SPEEDCAST UNIFIED GLOBAL MOBILITY PLATFORM



DEVICES



Agile, multi-orbit terminals will make it possible to smoothly integrate MEO and LEO satellite connectivity, and Speedcast has future-proofed its designs to simplify installation.



SIGMA: Providing significantly smarter network management, SIGMA's cloud-based solution automatically manages access to Speedcast's global networks across VSAT, L-band and 4G/LTE to provide users with a single, seamless experience.



Speedcast's advanced onboard modem interconnects with our global network to deliver 400/200 Mbps per modem, with higher availability from increased adaptivity and rain-fade mitigation.



TrueBeam: Speedcast's software-driven platform automatically performs smart beam-switching and traffic steering based on location, available capacity, footprint contours and committed information rates.



Speedcast integrates best-of-breed solutions from multiple partners that provide voice, video and data transmission for communication, sensing, tracking, remote-control, edge server applications and crew welfare.



SD-WAN: Speedcast's software-defined network technology seamlessly blends multiple transmission paths into a single, optimized, secure WAN that substantially improves performance while reducing total bandwidth requirements.

NETWORKS

Speedcast manages and integrates more satellite capacity than any other service provider and integrates it with 4G LTE and global fiber networks. Backing it up is global L-band coverage that maintains connectivity. To ensure dependable high performance, Speedcast developed advanced network management tools, including:



Cybersecurity as a Service: A comprehensive service, CaaS provides next-gen firewalls, endpoint security, secured remote access, anti-virus, threat management, intrusion protection and other essential security protection.



INFRASTRUCTURE



Speedcast operates its network management technologies and staff from **teleports, Super-Nodes and Network Operations Centers** at locations around the world.



The **Speedcast IoT Center** receives data from all connectivity paths, and manages service delivery, integration, process flow, security and API access, including remote operation.



Speedcast was the first satellite service provider to achieve Advanced Tier Partner status with **cloud services** provider Amazon Web Services (AWS). Today, SIGMA offers an AWS-validated on-ramp to the cloud, and our credentialed and experienced staff help customers navigate a secure and flexible path to cloud and application modernization.



The **Speedcast Compass** customer portal provides comprehensive and detailed visibility into all remote sites in real time, and multiple metrics for measuring performance. A streamlined case management system enables easy interaction with support and sales staff, with end-to-end visibility.



Our **LAUNCH Suite** provides the internet connections, entertainment, news and information that remote hospitality guests, as well as remote staff and crew members need to stay connected with home and fill their down time.

SOLUTIONS

The range of solutions available through Speedcast devices, networks and infrastructure is virtually unlimited. Today, Speedcast supports customer applications including:

- Advanced process automation and digital twinning
- IoT from asset tracking and fuel optimization to predictive maintenance
- Health and safety
- Automated environmental monitoring,
- Remote management
- Internet, news and entertainment for crew and passengers

SPEEDCAST UNIFIED GLOBAL MOBILITY PLATFORM

- ✓ Single platform with built-in automation
- ✓ All-in-one software-defined smart network management
- ✓ Proactive monitoring for the best network path based on operating environment
- ✓ Cloud-enabled to bring more value at the edge

Those who operate at the edge of the network and beyond are used to compromise. They count on networks being fragile and services unreliable. They are experts at making do with what's possible.

What's possible, however, is changing fast. Advancements in connectivity technologies are beginning to erase the edge. Speedcast has the network and management tools to make it possible today, enabling seamless adaptation for rapidly changing telecommunications technologies to deliver unprecedented choice, performance and simplicity.

The Speedcast Advantage

Speedcast is a leading communications and IT services provider, delivering critical communications services to the Maritime, Energy, Mining, Media, Telecom, Cruise, NGO, Government, and Enterprise sectors. The company leverages its global network platform to provide fully connected systems that harness technologies and applications to transform what remote operations can achieve. With the world's most comprehensive network, Speedcast enables faster, seamless pole-to-pole coverage from a global hybrid satellite, fiber, cellular, microwave, MPLS, and IP transport network with direct access to public cloud platforms. The company integrates differentiated technology offerings that provide smarter ways to communicate and distribute content, manage network and remote operations, protect and secure investments, and improve the crew and guest experience. With a passionate customer focus and a strong safety culture, Speedcast serves more than 3,200 customers in over 140 countries.

Contact Speedcast:
4400 S Sam Houston Parkway E, Houston, TX USA 77048
info@speedcast.com

[SPEEDCAST.COM](https://www.speedcast.com)